

3P Verges and beyond

Restoring and creating Roadside Meadows

Through Community action

Peter Carty
Chair Marches Meadow Group



RESTORING
SHROPSHIRE'S
VERGES
PROJECT





“These flower-lined lanes, with their sustained splendour from early spring to the end of autumn, are a priceless legacy in the border landscape. We must not lightly let them go” (Sinker, Ecological Flora of the Shropshire Region 1985)

Bow House verge – A489

Year 1



Year 2



Year 3









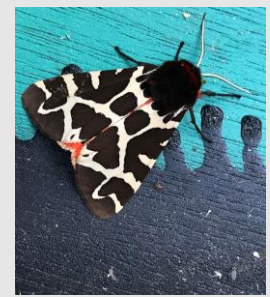
Plantlife

The
**good
verge
guide**

A different approach to managing
our waysides and verges



Going Wild In Bishops Castle







Summer programme of Nature activities

Nature events every week in Summer holidays was a success and much enjoyed

All for free!

30 kids attended

Monthly programme until next easter 2024

Training programme for volunteer leaders



No Mow May

Fox and Cubs

White clover

Birds foot trefoil

Bee re-fuelling station

Pams Meadow



Late
April

July

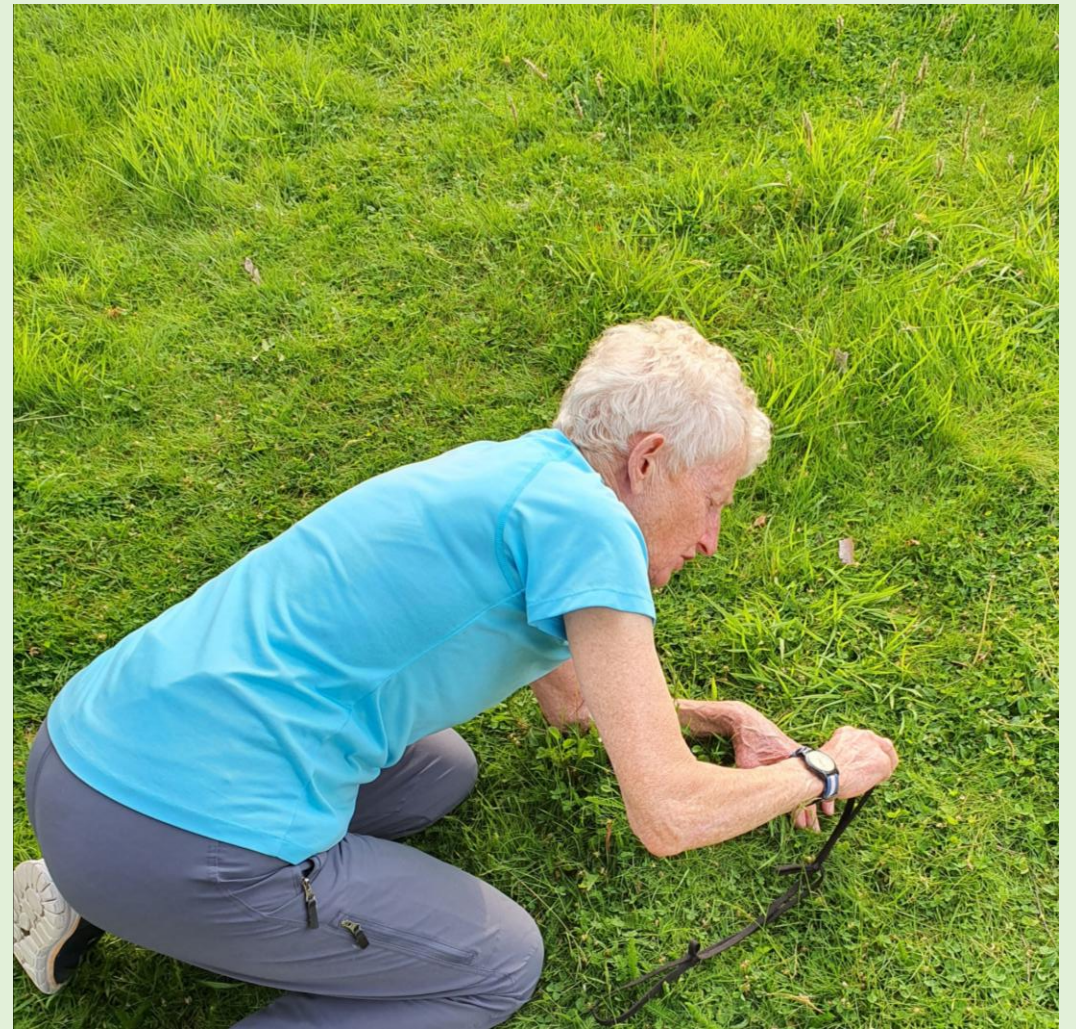


Autumn

A Takeaway message

Anyone can do a bit to put a Stepping Stone for nature into the landscape

Tess let her lawn in Coppall paddock grow into a meadow for the summer and found Adders tongue fern an indicator species of old grassland









Norbury Hill
A major
steppingstone
between Long
Mynd and
Stiperstones
NNR

MMCLT is owned and managed by local people to protect, conserve and restore our environment through the stewardship of land

Cudwell meadow – a wet meadow in Church Stretton

High Leasowes meadow Church Stretton





Fire exit



EXIT





MINSTERLEY MEADOWS APPEAL



CAN YOU HELP US PURCHASE MINSTERLEY MEADOWS FOR FUTURE GENERATIONS?



There is an exciting opportunity to purchase two flower-rich meadows on the outskirts of Minsterley, Shropshire to safeguard them for future generations.

Amongst many other species, the meadows support the largest colony of green-winged orchids in Shropshire. This has led to their designation as a Site of Special Scientific Interest (SSSI) by the government's nature conservation body, Natural England.

The meadows adjoin Callow Lane and are well used by local people for dog-walking, or as a pleasant walking route towards Callow Hill. They also adjoin the children's play area, enhancing their experience of being outdoors in nature.

The meadows would be owned by the Middle Marches Community Land Trust and the Marches Meadow Group would help manage them.









The Stepping Stones Project



UPPER ONNY FARMERS

PODCAST

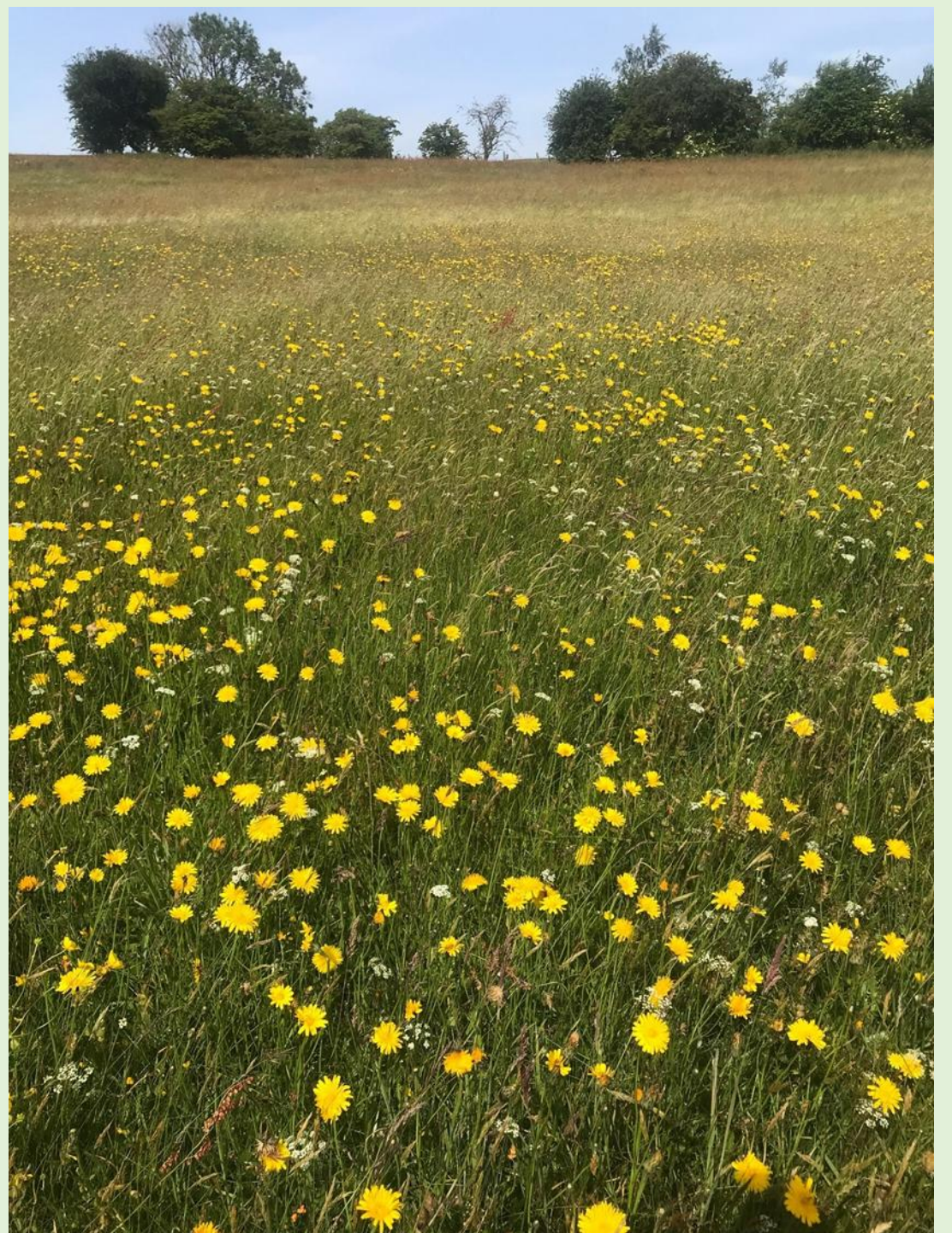


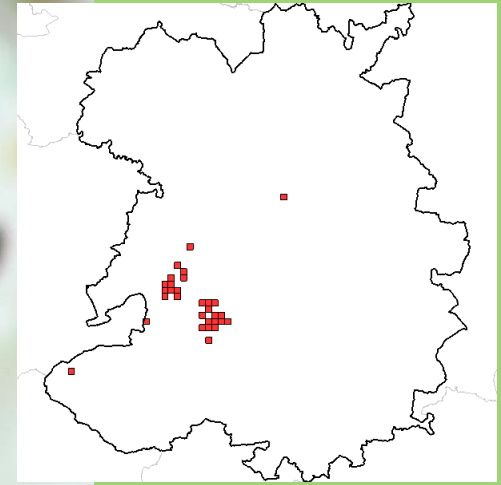




Restoring or creating 'stepping stones' and corridors of wildlife habitat between the Long Mynd and the Stiperstones.







Bilberry
Bumblebee



Meadow

Connected by



Road verges



Meadow

Herefordshire Meadows group

180 ha created 2025



Greater butterfly orchid

Indicator of meadow quality





RESTORING SHROPSHIRE'S VERGES PROJECT

